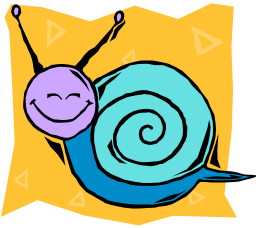


Slugs and Snails



Over the years there have been many and varied ways and ideas on how to control these pests in your growing area. The best one so far is to buy your grandchildren a turtle for a birthday or Christmas present and tell them they can keep it in your shadehouse. It will keep control of all those pests thus costing you nothing to feed it.

If you can't have a turtle, place pieces of strips of lettuce leaves on the floor and on top of your pots. At sundown these will attract these 'chewers' as they become active after dark. Go out about 9pm to 10pm and harvest them from the leaves. You will be surprised at how many of them are attracted to the leaves. Go out again before you go to bed and collect some more. Try this again before sunup and you may get another batch. After a couple of nights you will have most of those that reside in the pots and in your growing area. They never seem to chew the orchid you don't worry about and remember it's too late once they have chewed your favourite champion plant. Try this; you will find it very successful.

David & Pat Harmer

Salisbury Heights, South Australia. Orchids Australia, February 2007

These notes have been used at our Cultural and New Grower's Meetings. They are from various sources and we thank the authors. All articles are supplied in good faith and the Bribie Island Orchid Society and its members will not be held responsible for any loss or damage.